

Computer Login Usage for Labs Application Usage

September thru December 2009

Beginning: 08/01/2009 thru 12/31/2009

Data thru: 11/23/2009 9:20:44PM

Report Name: LOGS_Application_Total_Usage

Modification Date: 11/23/2009

Report Information:

This report prints chart statistics for application usage from the ITS labs. The charts print statistics on total usage by application. Applications are reported on by month/year and not day.

The following selection criteria are used: selects log-in data for dates specified for application.

The chart data is sorted in alphabetic order.

The data is current as of the last Data thru date.

Special Information:

The data for the applications begins on March 15, 2009. We do not have data before that date.

The application statistics does not include the 2 apple computers in UGL lab.

Number of Desktop Computers per supported room:

Davis Library (Davis) - 59

R. B. House Undergraduate Library Lab (UGL Lab) - 71 Lab; 2 iMac (Apple Computers)

R. B. House Undergraduate Library Classroom (UGL CL) - 14

Saunders Classroom (Saunders CL) - 23

School of Public Health (SPH) - 62

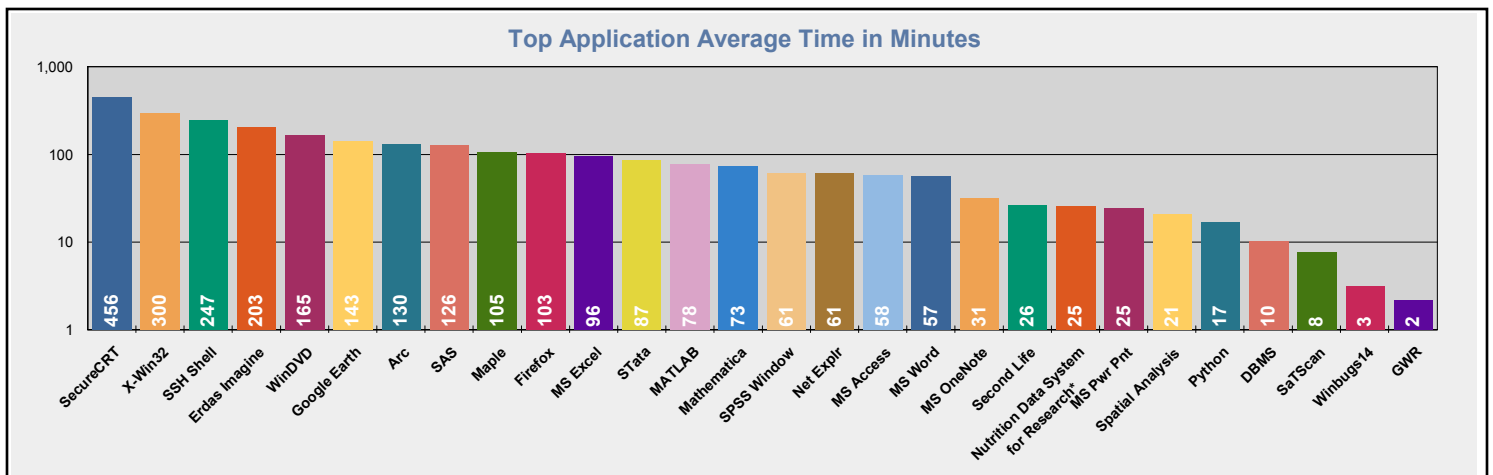
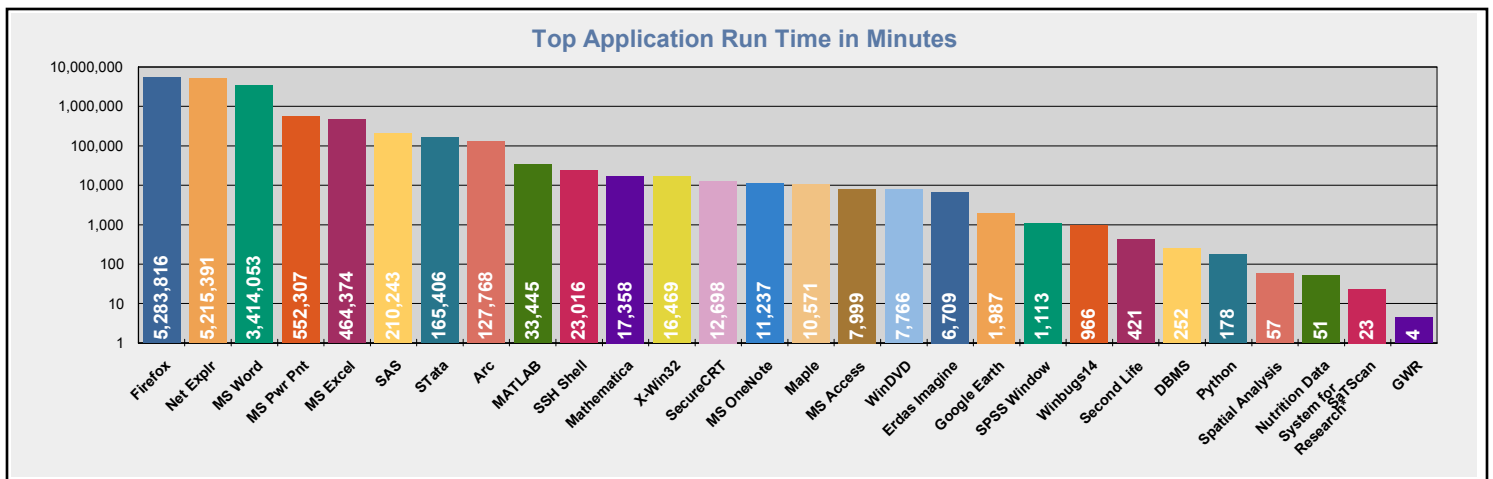
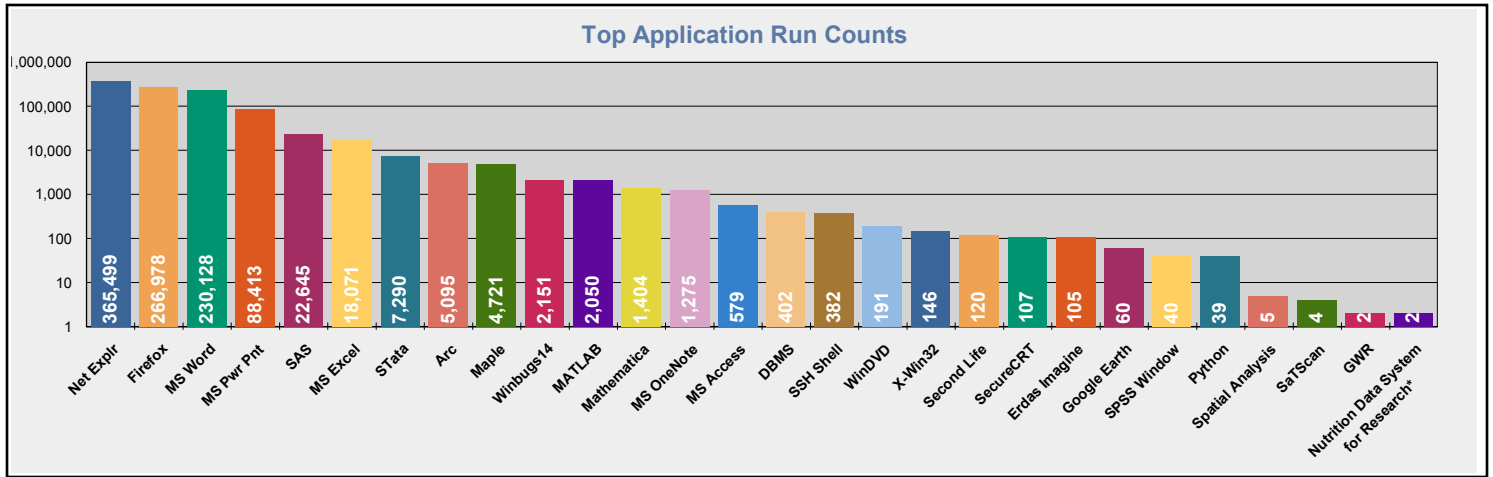
Student & Academic Services Building (SASB) - 25

Student Union (UNN) - 51

Total Computers Available in Labs and Classrooms: 307

Computer Application Usage September thru December 2009

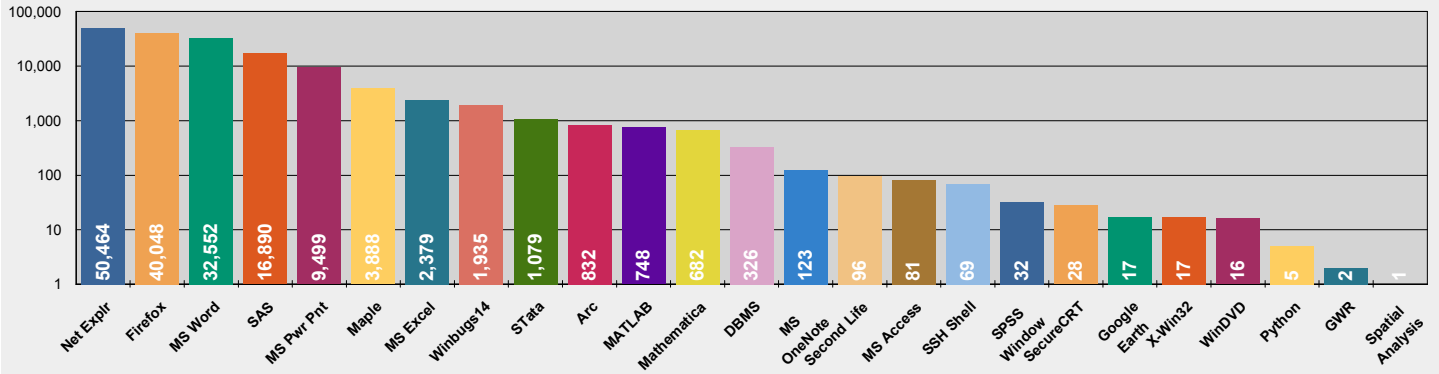
Beginning: 08/01/2009 thru 12/31/2009
Data thru: 11/23/2009 9:20:44PM



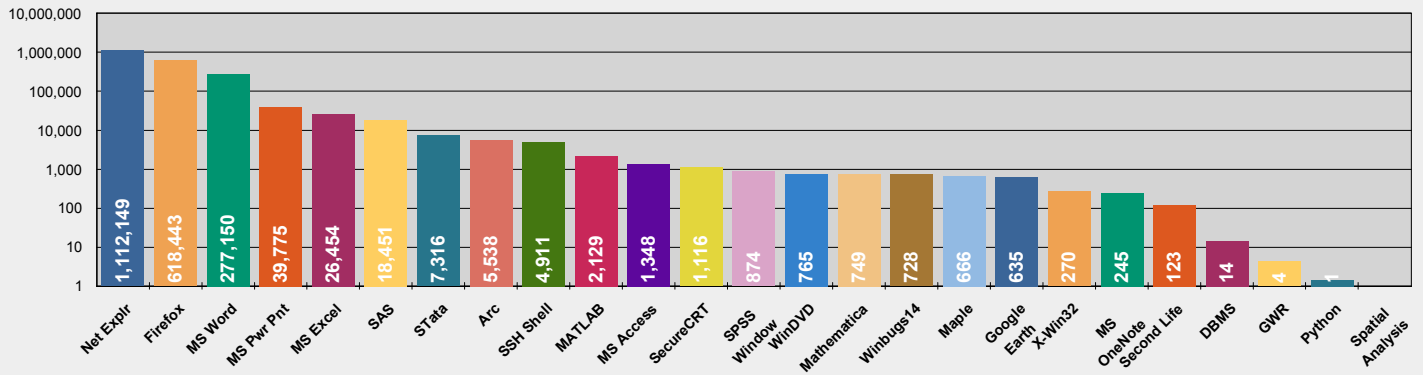
Computer Application Usage September thru December 2009

Beginning: 08/01/2009 thru 12/31/2009
Data thru: 11/23/2009 9:20:44PM
August 2009

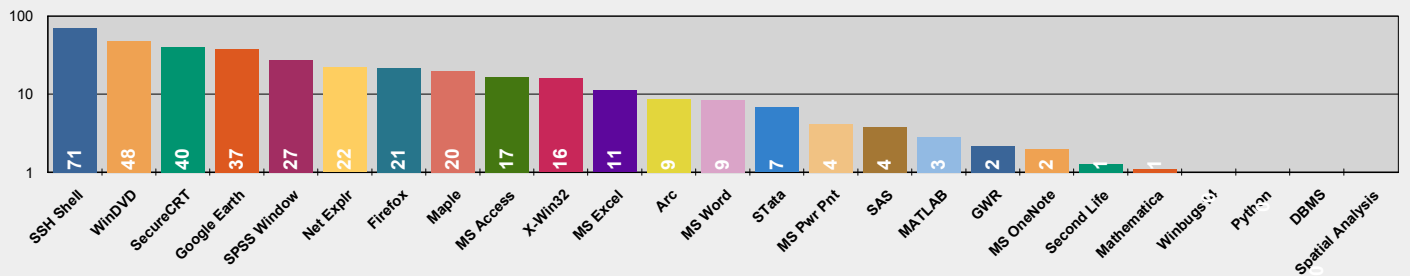
Top Application Run Count For August 2009



Top Application Run Time in Minutes For August 2009



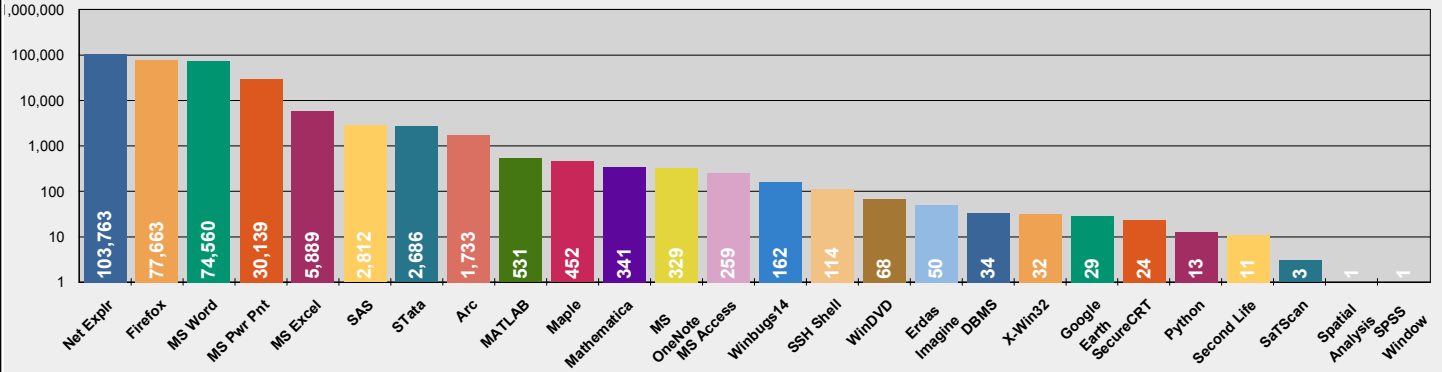
Top Application Average Time in Minutes For August 2009



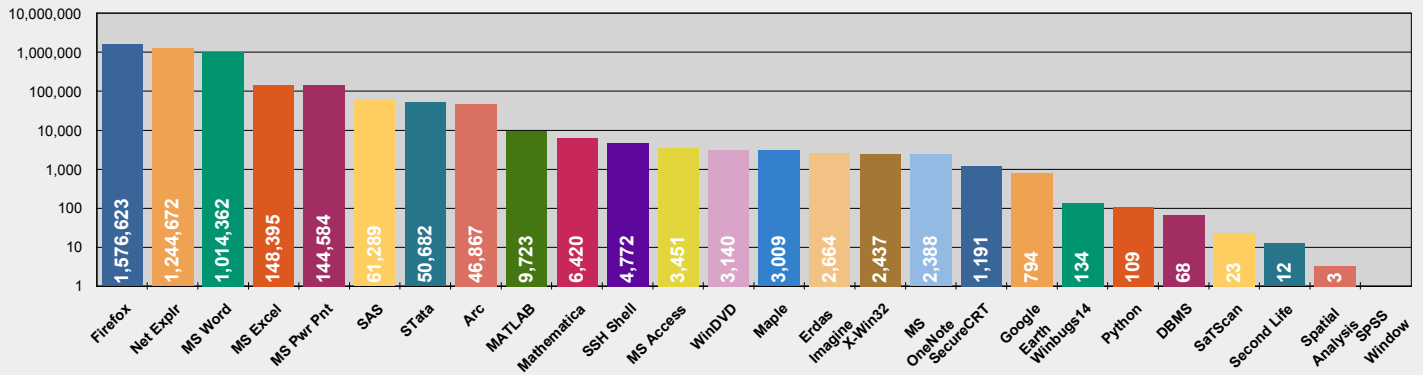
Computer Application Usage September thru December 2009

Beginning: 08/01/2009 thru 12/31/2009
Data thru: 11/23/2009 9:20:44PM
September 2009

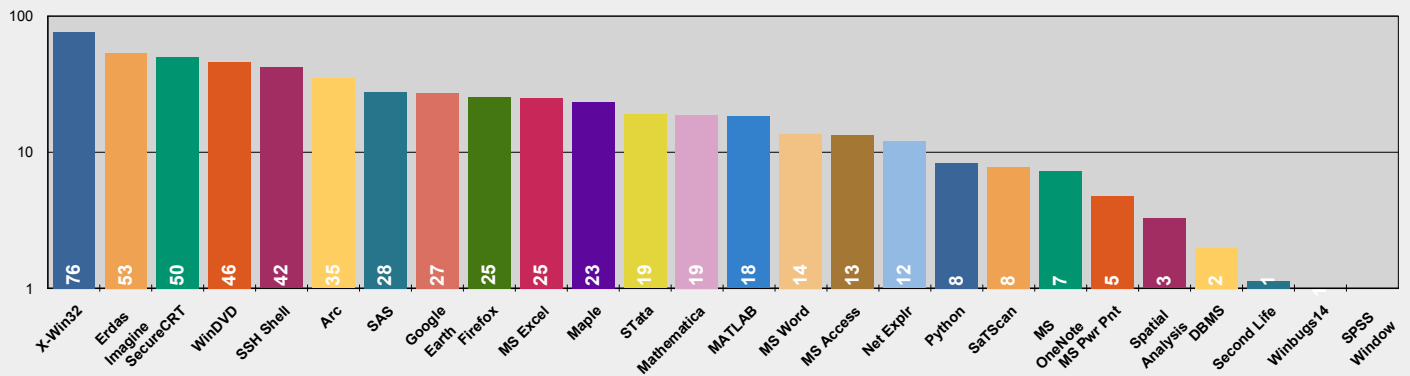
Top Application Run Count For September 2009



Top Application Run Time in Minutes For September 2009



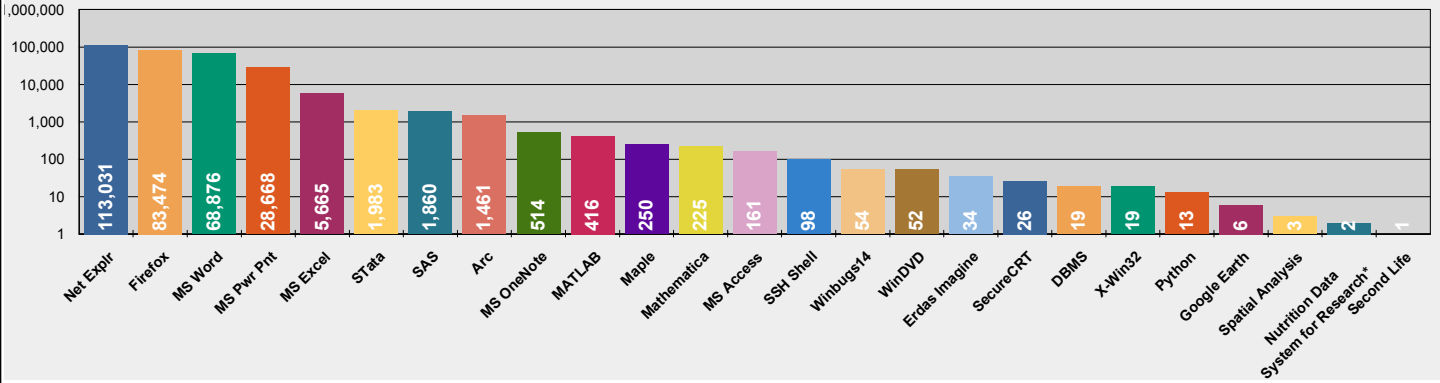
Top Application Average Time in Minutes For September 2009



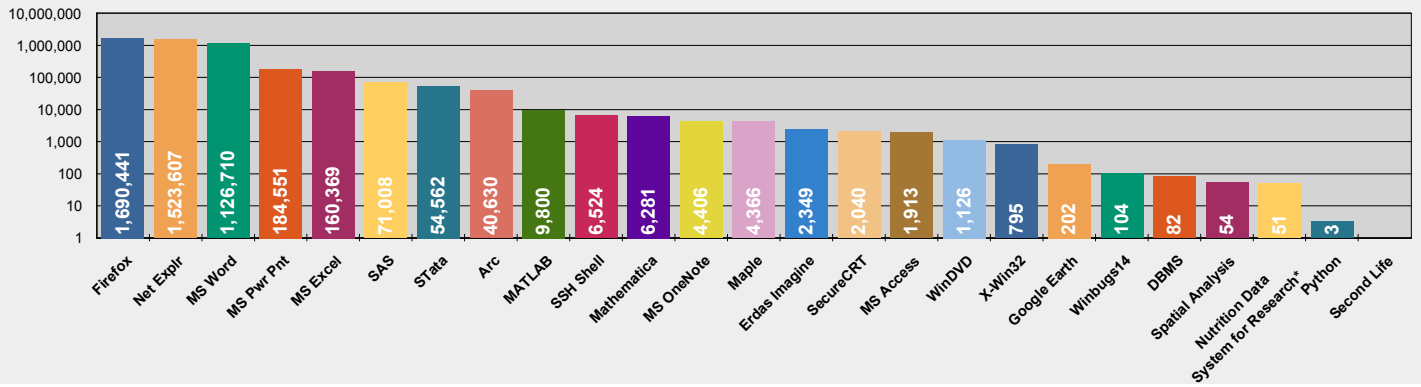
Computer Application Usage September thru December 2009

Beginning: 08/01/2009 thru 12/31/2009
Data thru: 11/23/2009 9:20:44PM
October 2009

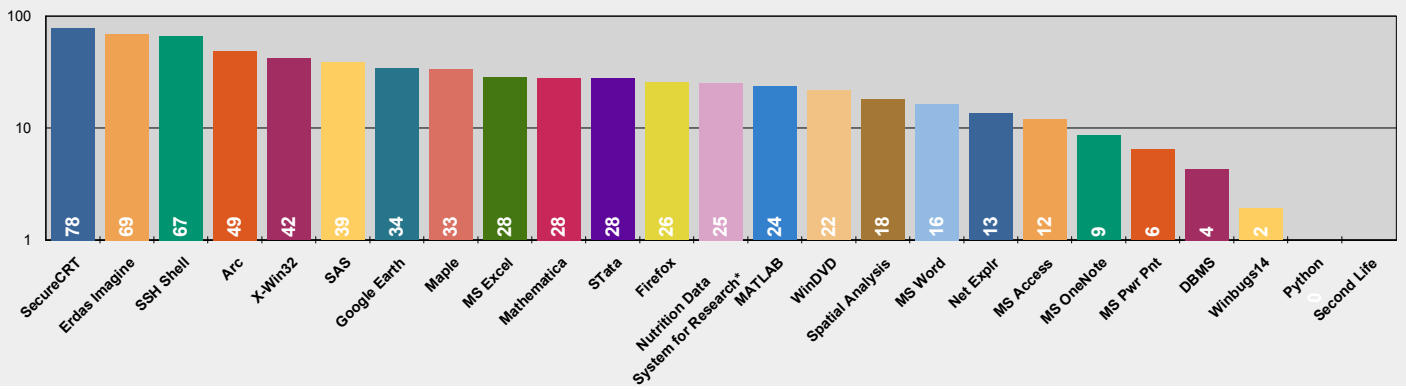
Top Application Run Count For October 2009



Top Application Run Time in Minutes For October 2009



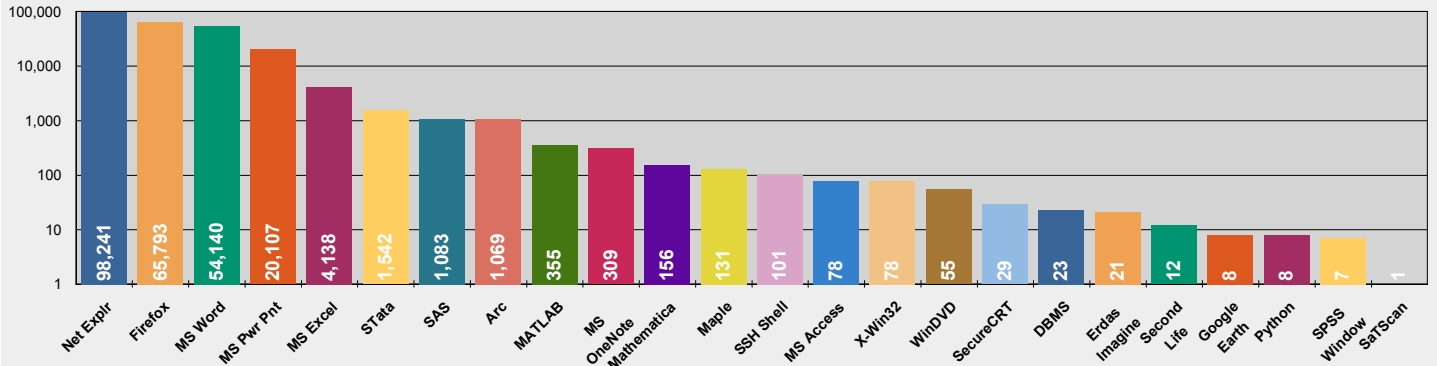
Top Application Average Time in Minutes For October 2009



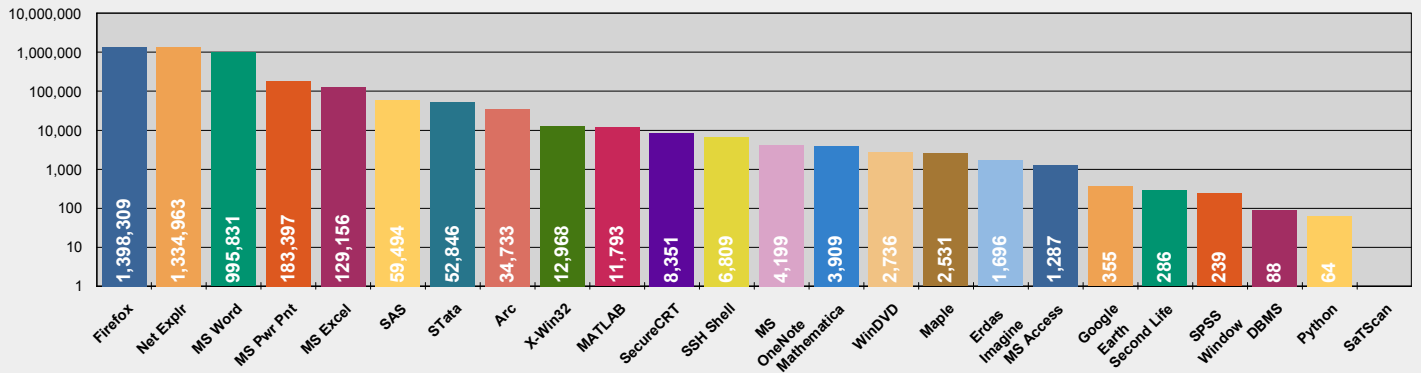
Computer Application Usage September thru December 2009

Beginning: 08/01/2009 thru 12/31/2009
Data thru: 11/23/2009 9:20:44PM
November 2009

Top Application Run Count For November 2009



Top Application Run Time in Minutes For November 2009



Top Application Average Time in Minutes For November 2009

